

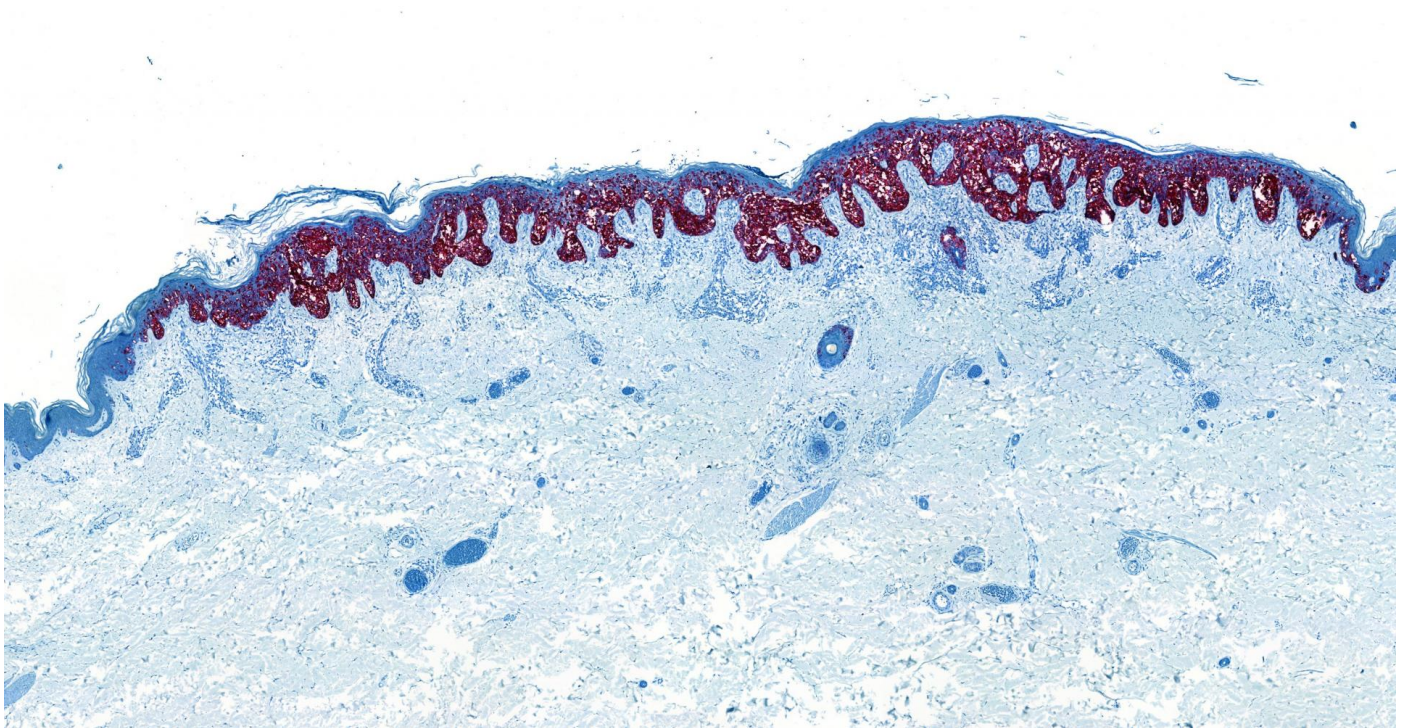


IDA-TALLINNA KESKHAIGLA

AS Ida-Tallinna Keskhaigla  
Ravi 18, 10138 Tallinn  
Rg-kood 10822068  
Tel 666 1900  
E-post [info@itk.ee](mailto:info@itk.ee)  
[www.itk.ee](http://www.itk.ee)

## Centre of Pathology

Pathology uses morphological methods to describe the pathological changes in cell and tissue samples collected during life or after death. The aim of the Pathology Centre is to provide an assessment of the diagnosis and quality of treatment of diseases, thereby improving the basics of medical knowledge. Professionally trained staff use state-of-the-art equipment and state-of-the-art research methods. Doctors at the Pathology Centre use the digital pathology system in their daily work. It is a research method that allows for the creation of a complete image of a slide through the scanning of several high-quality images of the slide, thus digitising the slide, and using a high-resolution monitor to evaluate all of the tissue on the slide. It is equally possible to estimate and measure tumour areas on the digital slide and calculate tumour cell counts on the slide using additional immunohistochemical staining and programme parts.



In addition, we perform **pathoanatomical autopsies** in order to determine the cause of unexplained death or, in the case of death caused by a disease, to assess the disease and its course, as well as in cases necessary for general health care and the quality of treatment.

The Pathology Centre uses modern and high-quality equipment, competent and trained personnel, and ISO 15189 accreditation meeting international standards (accreditation certificate No M016).

Our Centre's research

- [Pathology Centre Research Manual](#)
- [List of studies at the Pathology Centre](#)
- [Packaging and transport of research materials](#)

Ordering slides and tissue and cell blocks from the Pathology Centre

- [Form for ordering slides and tissue and cell blocks from the Pathology Centre](#)

## Aadressid

### Centre of Pathology

Herne 33, Tallinn

[666 1900](tel:6661900)

## Staff

### Erik Tamp



[5590 5054](tel:55905054)

[erik.tamp@itk.ee](mailto:erik.tamp@itk.ee)

### Kristi Laht



[620 7279](tel:6207279)

[kristi.laht@itk.ee](mailto:kristi.laht@itk.ee)

## Sille Mirka



[620 7277](tel:6207277)

[sille.mirka@itk.ee](mailto:sille.mirka@itk.ee)